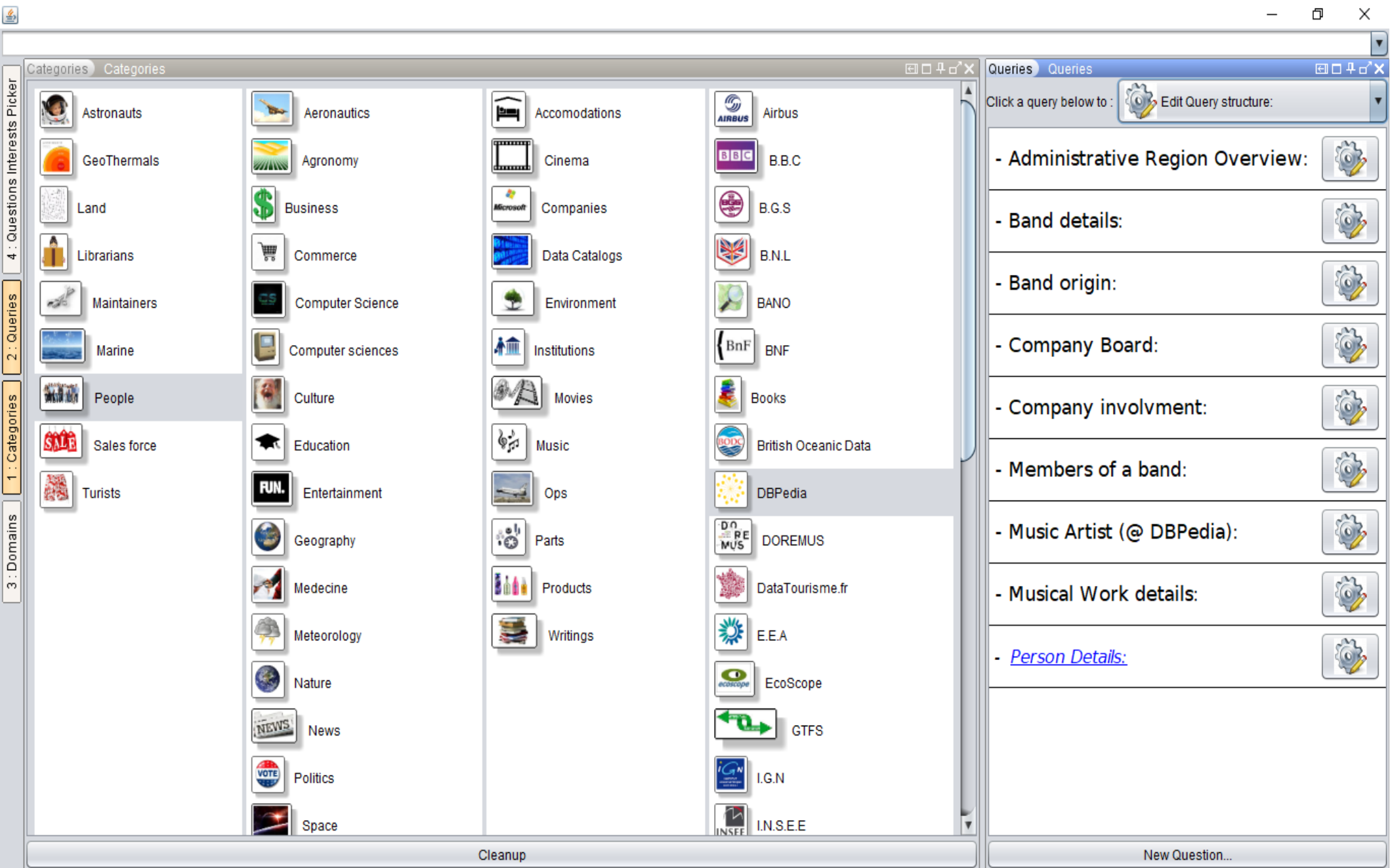


L'administration



Categories Categories

- Astronauts
- GeoThermals
- Land
- Librarians
- Maintainers
- Marine
- People
- Sales force
- Tourists
- Aeronautics
- Agronomy
- Business
- Commerce
- Computer Science
- Computer sciences
- Culture
- Education
- Entertainment
- Geography
- Medicine
- Meteorology
- Nature
- News
- Politics
- Space
- Accommodations
- Cinema
- Companies
- Data Catalogs
- Environment
- Institutions
- Movies
- Music
- Ops
- Parts
- Products
- Writings
- Airbus
- B.B.C
- B.G.S
- B.N.L
- BANO
- BNF
- Books
- British Oceanic Data
- DBpedia
- DOREUMUS
- DataTourisme.fr
- E.E.A
- EcoScope
- GTFS
- I.G.N
- I.N.S.E.E

Queries Queries

- Click a query below to : Edit Query structure:
- **Administrative Region Overview:**
  - **Band details:**
  - **Band origin:**
  - **Company Board:**
  - **Company involvment:**
  - **Members of a band:**
  - **Music Artist (@ DBpedia):**
  - **Musical Work details:**
  - [Person Details:](#)
- Cleanup New Question...

Close query Run query

Data sources

- DBPedia..
- DOREMUS..
- DOREMUS (model)..
- DataTourisme.fr..
- DataTourisme.model..
- DublinCore..
- EEA..
- EbuCore..
- GeoPortal.ch..
- IGN..

Relationships

- StadiumOrArena
- SymmetricProperty
- TelevisionEpisode
- TelevisionStation
- TennisPlayer
- Thing
  - Activity
  - Agent
    - Organisation
    - Person

Query

```

graph TD
    Person[Person] -- label --> BirthLocation[BirthLocation (*)]
    Person -- label --> BirthPlace[BirthPlace]
    Person -- label --> Label[Label (*)]
    Person -.- birthPlace -- birthPlace --> BirthPlace
    Person -.- birthDate -- birthDate --> BirthDate[BirthDate (*)]
    Person -.- depiction -- depiction --> Depiction[Depiction (*)]
    Person -.- abstract -- abstract --> Abstract[Abstract (*)]
    
```

BirthLocation (\*) BirthPlace Label (\*) BirthDate (\*) Depiction (\*) Abstract (\*)

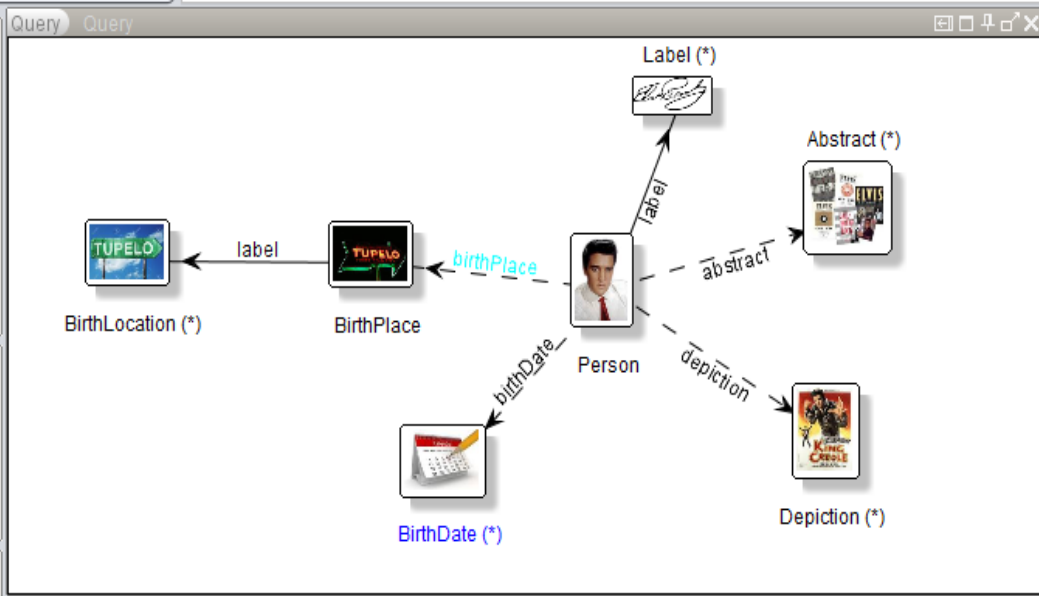
label label label birthPlace birthDate depiction abstract

Person

(  LIMIT: 500 )
(  LANG: en )
(View: form )
Current layout: MyStaticLayout

Query

4 : Questions Interests Picker  
6 : All ontologies  
3 : Domains



# Tom Cruise

---

Birth date: unknown  
 Birth place: [unknown](#)  
 Abstract: A long abstract

---

Browser DOM

- ▼ DIV
  - ① @style=
  - ▼ SPAN
    - ▼ U
      - ① "Birth place:"
      - ▼ SPAN(followAll BirthPlace)
        - ▼ A
          - ① @href= (setToUriOf BirthPlace)
          - ▼ SPAN(setContentTo http://www.w3.org/2000/01/rdf-schema#label)
            - ① " unknown"
- ▼ DIV
  - ① @style=text-align:justify
  - ▼ SPAN
    - ▼ U
      - ① "Abstract:"
      - ▼ SPAN(setContentTo http://dbpedia.org/ontology/abstract)
        - ① " A long abstract"

View HTML

Categories Categories

2 : Queries

1 : Categories

6 : All ontologies

4 : Questions Interests Picker

3 : Domains

Queries Queries

Click a query below to : Edit Query structure:

- Administrative Region Overview:

- Band origin:

- [Place location:](#)

- Road:

- Road Junctions:

- Town details:

Cleanup

New Question...

Astronauts	Aeronautics	Accomodations	Airbus
GeoThermals	Agronomy	Cinema	B.B.C
Land	Business	Companies	B.G.S
Librarians	Commerce	Data Catalogs	B.N.L
Maintainers	Computer Science	Environment	BANO
Marine	Computer sciences	Institutions	BnF
People	Culture	Movies	Books
Sales force	Education	Music	British Oceanic Data
Tourists	Entertainment	Ops	DBpedia
	Geography	Parts	DORE MUS
	Medecine	Products	DataTourisme.fr
	Meteorology	Writings	E.E.A
	Nature		EcoScope
	News		GTFS
	Politics		I.G.N
	Space		I.N.S.E.E

Close query Run query

Data sources Data sources

Relationships Relationships

DBpedia..  
DOREMUS..  
DOREMUS (model)..  
DataTourisme.fr..  
DataTourisme.model..  
DublinCore..  
EEA..  
EbuCore..  
GeoPortal.ch..  
IGN..

9 : Entities

Entities Entities

- Ideology
- Language
- LegalCase
- Letter
- MeanOfTransportation
- MusicGenre
- Name
- OlympicResult
- PersonFunction
- Place

7 : Data sources

4 : Questions Interests Picker

Relationships Relationships

- abstract
- advert
- annualTemperature
- areaCodeType
- areaLand
- areaTotal
- areaTotalKm
- areaWater
- climate

6 : All ontologies

Save as: Save data model

Query Query

Place

DBpedia:lat

Lat (\*)

DBpedia:long

Long (\*)

DBpedia:depiction

Depiction (\*)

DBpedia:label

Label (\*)

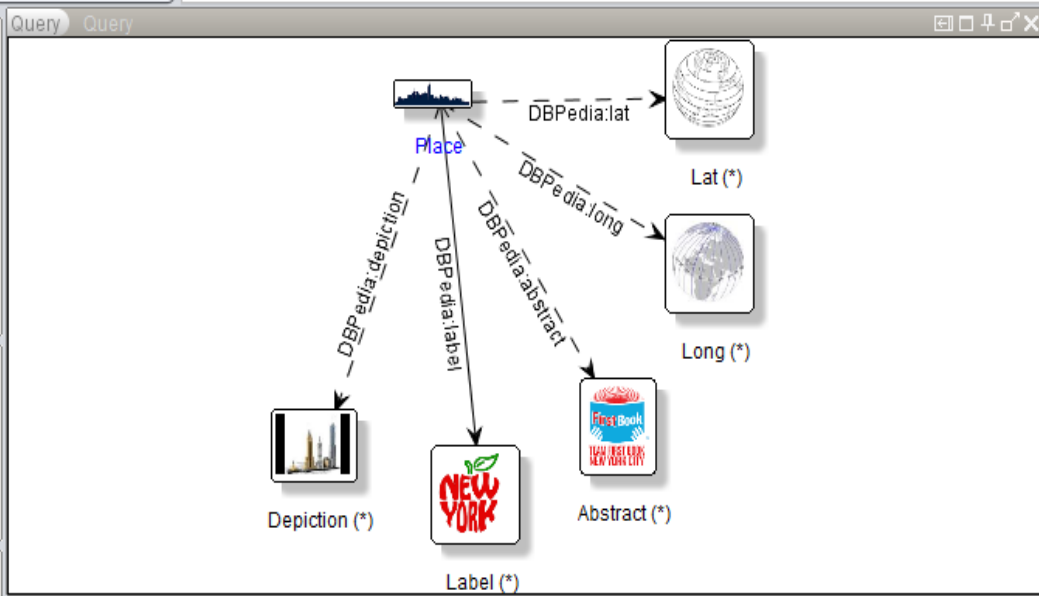
DBpedia:abstract

Abstract (\*)

(  LIMIT: 500 ) (  LANG: en ) (View: form ) Current layout: MyStaticLayout

Play Explanation

4 : Questions Interests Picker  
6 : All ontologies  
3 : Domains



placelabel here

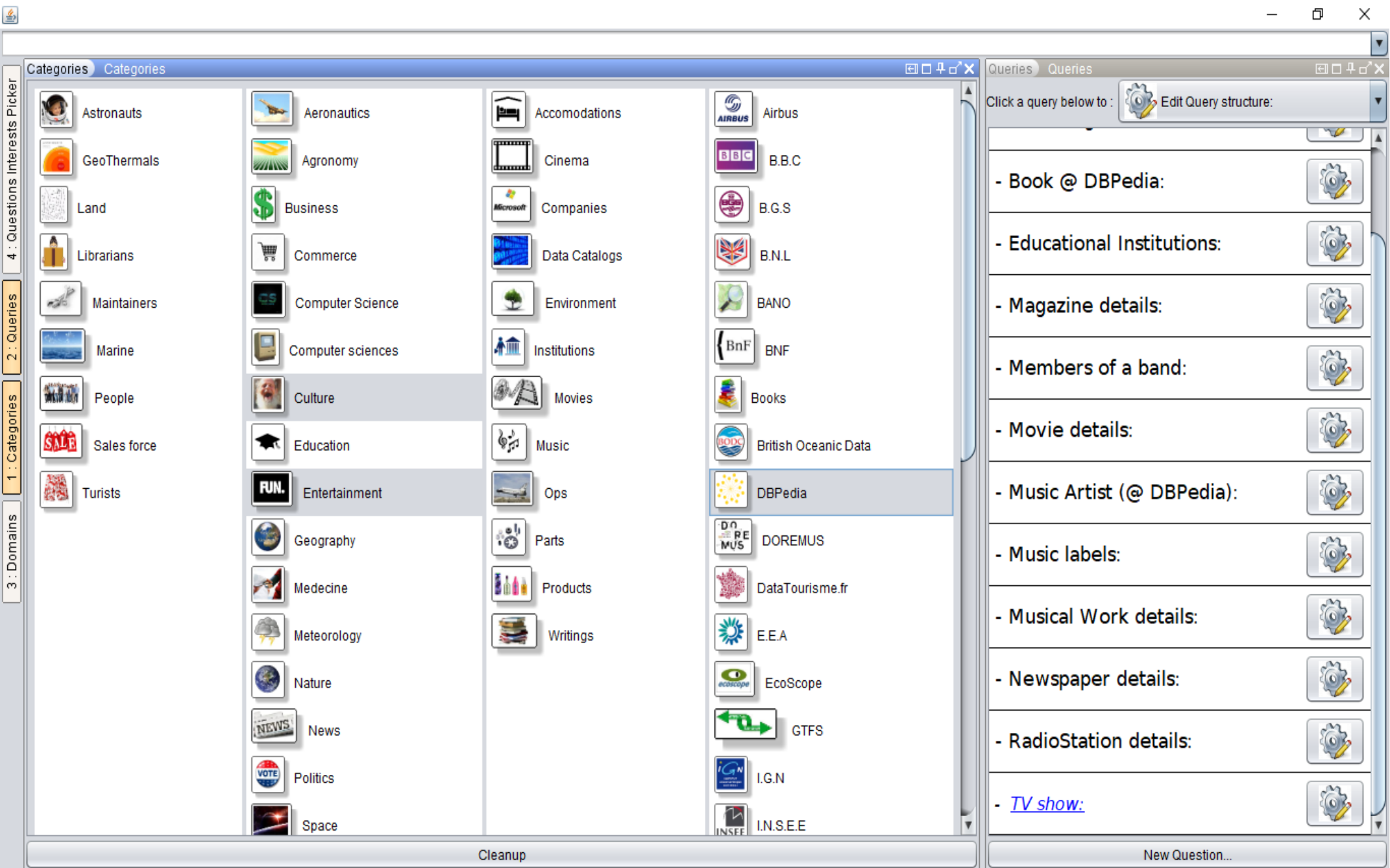
**Abstract:** abstact here

View HTML

Browser DOM

- HTML
  - HEAD
  - BODY
    - ...
      - DIV (foreach Place)**
        - CENTER
          - ...
            - H1
              - A
                - @href=toUri (setToUriOf Place)
                - SPAN(setContentTo Label)
                  - " placelabel here"

- BR
- DIV
- @style=overflow: hidden
- ...
- SPAN(followAll Depiction)



Categories Categories

- |             |                   |               |                      |
|-------------|-------------------|---------------|----------------------|
| Astronauts  | Aeronautics       | Accomodations | Airbus               |
| GeoThermals | Agronomy          | Cinema        | B.B.C                |
| Land        | Business          | Companies     | B.G.S                |
| Librarians  | Commerce          | Data Catalogs | B.N.L                |
| Maintainers | Computer Science  | Environment   | BANO                 |
| Marine      | Computer sciences | Institutions  | BNF                  |
| People      | Culture           | Movies        | Books                |
| Sales force | Education         | Music         | British Oceanic Data |
| Tourists    | Entertainment     | Ops           | DBPedia              |
|             | Geography         | Parts         | DOREMUS              |
|             | Medicine          | Products      | DataTourisme.fr      |
|             | Meteorology       | Writings      | E.E.A                |
|             | Nature            |               | EcoScope             |
|             | News              |               | GTFS                 |
|             | Politics          |               | I.G.N                |
|             | Space             |               | I.N.S.E.E            |

Queries Queries

- Click a query below to : Edit Query structure:
- Book @ DBPedia:
  - Educational Institutions:
  - Magazine details:
  - Members of a band:
  - Movie details:
  - Music Artist (@ DBPedia):
  - Music labels:
  - Musical Work details:
  - Newspaper details:
  - RadioStation details:
  - [TV show:](#)

4 : Questions Interests Picker

2 : Queries

1 : Categories

3 : Domains

Cleanup

New Question...



Close query Run query

Data sources Data sources

Relationships Relationships

DBpedia..  
DOREMUS..  
DOREMUS (model)..  
DataTourisme.fr..  
DataTourisme.model..  
DublinCore..  
EEA..  
EbuCore..  
GeoPortal.ch..  
IGN..

9 : Entities

Entities Entities

- Unknown
- Work
  - Artwork
  - Film
  - Musical
  - MusicalWork
  - Software
  - TelevisionEpisode
  - TelevisionSeason
  - TelevisionShow

7 : Data sources

4 : Questions Interests Picker

Relationships Relationships

- companySlogan
- companyType
- completionDate
- composer
- composer
- country
- creativeDirector
- creator
- depiction

6 : All ontologies

Save as: Save data model

Query Query

TelevisionShow

DBpedia:label

Label (\*)

DBpedia:abstract

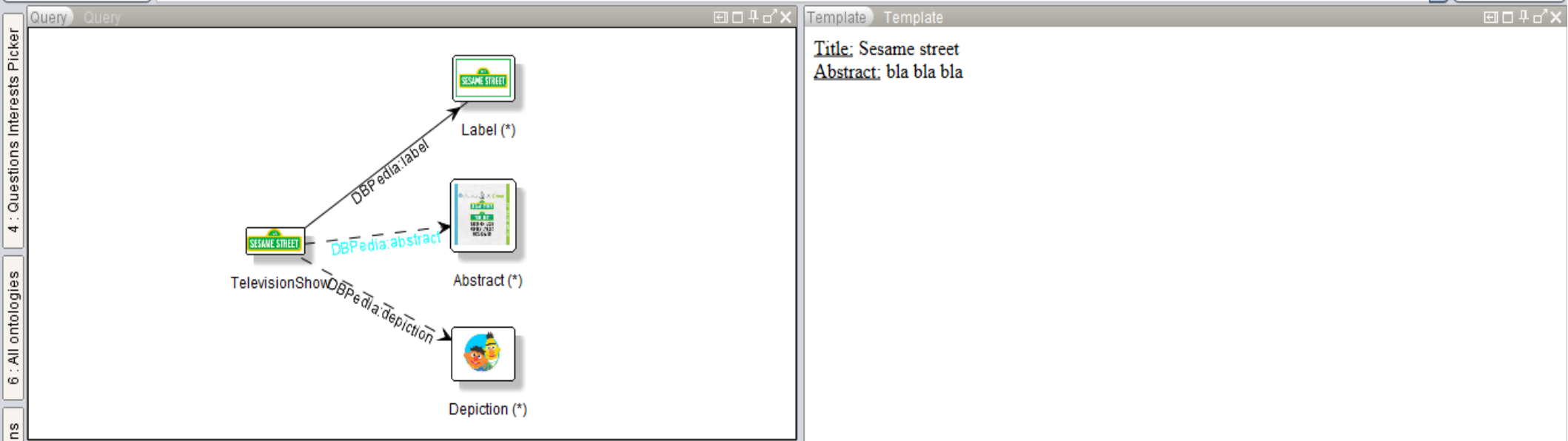
Abstract (\*)

DBpedia:depiction

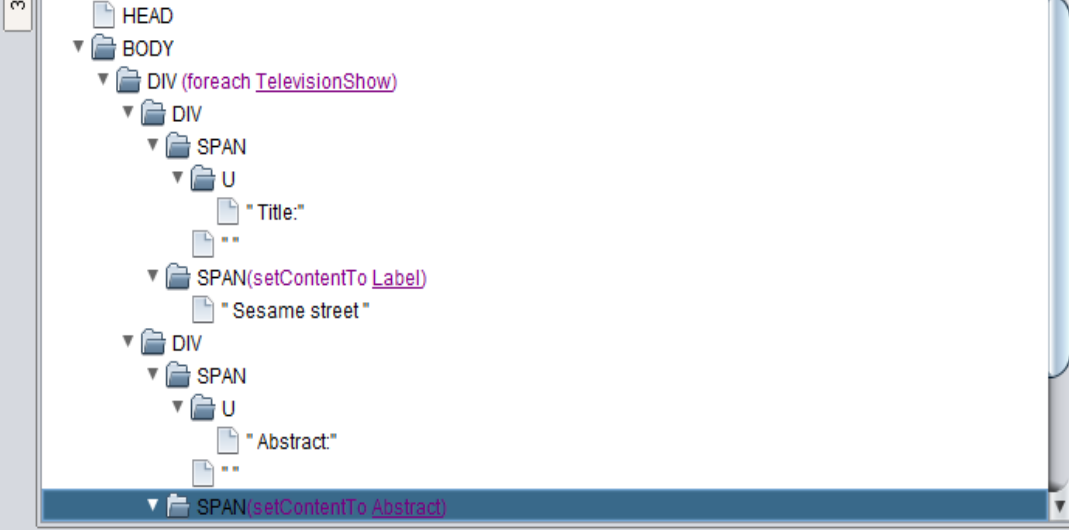
Depiction (\*)

(  LIMIT: 500 ) (  LANG: en ) (View: table ) Current layout: MyStaticLayout

Play Explanation



Title: Sesame street  
Abstract: bla bla bla



View HTML

La recherche/navigation

We index [alive endpoints](#) of the LinkedData.

[Launch Datao](#) to visually edit queries, HTML templates, remote data.

Search the LinkedData labels/URIs for :

Try [iswc](#) or [25th street](#) or [tom cruise](#) or [life on mars](#) or whatever you like (just type text in the form).

We index [alive endpoints](#) of the LinkedData.

[Launch Datao](#) to visually edit queries, HTML templates, remote data.

Search the LinkedData labels/URIs for :

Try [iswc](#) or [25th street](#) or [tom cruise](#) or [life on mars](#) or whatever you like (just type text in the form).

We index [alive endpoints](#) of the LinkedData. [Launch Datao](#) to visually edit queries, HTML templates, remote data.

Search the LinkedData labels/URIs for :

Try [iswc](#) or [25th street](#) or [tom cruise](#) or [life on mars](#) or whatever you like (just type text in the form).

Facet:

Interests:

- Business (1)
- Cinema (2)
- Culture (10)
- Data Catalogs (3)
- DBPedia (10)
- DOREMUS (1)
- Entertainment (5)
- Librarians (3)
- LinkedMDB (1)
- Movies (4)
- Music (1)
- People (3)
- WorldCat (3)

Types:

- Actor (2)
- actor (1)
- Agent (2)
- Agent (3)
- Artist (2)
- Book (5)
- Book (3)
- Book (3)
- Concept (4)
- CreativeWork (4)

- **Tom Cruise.**  
- Musical person @ DOREMUS

- **Tom Cruise.**  
- MusicArtist @ LinkedBrainz

- **Tom Cruise.**  
- Subcategories @ DBPedia  
- Resources in category @ DBPedia  
- Belongs to categories @ DBPedia

- **Tom Cruise, توم كروز, トム・クルーズ.**  
- Person Details  
- Movie details

- **Tom Cruise.**

- **Tom Cruise.**

- **Cruise, Tom., Cruise, Tom, 1962-.**  
- Book details



We index [alive endpoints](#) of the [LinkedData](#).

[Launch Datao](#) to visually edit queries, HTML templates, remote data.

Search the [LinkedData labels/URIs](#) for :

Try [iswc](#) or [25th street](#) or [tom cruise](#) or [life on mars](#) or whatever you like (just type text in the form).

Facet:

- Interests:
- Business (1)
  - Cinema (2)
  - Culture (10)
  - Data Catalogs (3)
  - DBPedia (10)
  - DOREMUS (1)
  - Entertainment (5)
  - Librarians (3)
  - LinkedMDB (1)
  - Movies (4)
  - Music (1)
  - People (3)
  - WorldCat (3)

- Types:
- Actor (2)
  - actor (1)
  - Agent (2)
  - Agent (3)
  - Artist (2)
  - Book (5)
  - Book (3)
  - Book (3)
  - Concept (4)
  - CreativeWork (1)

<http://dbpedia.org/sparql> > [http://dbpedia.org/resource/Tom\\_Cruise](http://dbpedia.org/resource/Tom_Cruise)

- [Tom Cruise.](#)  
- [Musical person @ DOREMUS](#)

- [Tom Cruise.](#)  
- [MusicArtist @ LinkedBrainz](#)

- [Tom Cruise.](#)  
- [Subcategories @ DBPedia](#)  
- [Resources in category @ DBPedia](#)  
- [Belongs to categories @ DBPedia](#)

- [Tom Cruise, توم كروز, トム・クルーズ.](#)  
- [Person Details](#)  
- [Movie details](#)

- [Tom Cruise.](#)

- [Tom Cruise.](#)

- [Cruise, Tom., Cruise, Tom, 1962-.](#)  
- [Book details](#)

# Tom Cruise



Birth date: 1962-7-3, 1962-07-03  
Birth place: [Syracuse, New York](#)

Abstract: Thomas Cruise Mapother IV (born July 3, 1962), known professionally as Tom Cruise, is an American actor and producer. He has been nominated for three Academy Awards and has won three Golden Globe Awards. He started his career at age 19 in the film *Endless Love* (1981). After portraying supporting roles in *Taps* (1981) and *The Outsiders* (1983), his first leading role was in the romantic comedy *Risky Business*, released in August 1983. Cruise became a full-fledged movie star after starring as Pete "Maverick" Mitchell in the action drama *Top Gun* (1986). One of the biggest movie stars in Hollywood, Cruise starred in several more successful films in the 1980s, including the dramas *The Color of Money* (1986), *Cocktail* (1988), *Rain Man* (1988),

and *Born on the Fourth of July* (1989). In the 1990s, he starred in a number of hit films, including the romance *Far and Away* (1992), the drama *A Few Good Men* (1992), the legal thriller *The Firm* (1993), the romantic horror film *Interview with the Vampire: The Vampire Chronicles* (1994), the romantic comedy-drama sports film *Jerry Maguire* (1996), the erotic thriller *Eyes Wide Shut*, and the drama *Magnolia* (both 1999). Since 1996, Cruise has been well known for his role as secret agent Ethan Hunt in the *Mission: Impossible* film series, whose most recent film, *Mission: Impossible – Rogue Nation*, was released in 2015. In the 2000s, Cruise starred in a number of successful films, including the science fiction thrillers *Vanilla Sky* (2001) and *Minority Report* (2002), the epic war film *The Last Samurai* (2003), the crime film *Collateral* (2004), the science fiction disaster thriller *War of the Worlds* (2005), and the historical thriller *Valkyrie* (2008). In the 2010s, he has starred in the action comedy *Knight and Day* (2010), the thriller *Jack Reacher* (2012), the post-apocalyptic science fiction film *Oblivion* (2013), and the military science fiction film *Edge of Tomorrow* (2014). In 2012, Cruise was Hollywood's highest-paid actor. 16 of his films grossed over \$100 million domestically; 22 have grossed in excess of \$200 million worldwide. He has won Golden Globe Awards for Best Performance by an Actor in a Motion Picture in Drama in 1990 for *Born on the Fourth of July*; Best Performance by an Actor in a Motion Picture in

We index [alive endpoints](#) of the [LinkedData](#).

[Launch Datao](#) to visually edit queries, HTML templates, remote data.

Search the [LinkedData labels/URIs](#) for :

Try [iswc](#) or [25th street](#) or [tom cruise](#) or [life on mars](#) or whatever you like (just type text in the form).

Facet:

Interests:

- Business (1)
- Cinema (2)
- Culture (10)
- Data Catalogs (3)
- DBPedia (10)
- DOREMUS (1)
- Entertainment (5)
- Librarians (3)
- LinkedMDB (1)
- Movies (4)
- Music (1)
- People (3)
- WorldCat (3)

Types:

- Actor (2)
- actor (1)
- Agent (2)
- Agent (3)
- Artist (2)
- Book (5)
- Book (3)
- Book (3)
- Concept (4)

<http://dbpedia.org/sparql> > [http://dbpedia.org/resource/Tom\\_Cruise](http://dbpedia.org/resource/Tom_Cruise)

- [Tom Cruise.](#)  
- [Musical person @ DOREMUS](#)

- [Tom Cruise.](#)  
- [MusicArtist @ LinkedBrainz](#)

- [Tom Cruise.](#)  
- [Subcategories @ DBPedia](#)  
- [Resources in category @ DBPedia](#)  
- [Belongs to categories @ DBPedia](#)

- [Tom Cruise, توم كروز, トム・クルーズ.](#)  
- [Person Details](#)  
- [Movie details](#)

- [Tom Cruise.](#)

- [Tom Cruise.](#)

- [Cruise, Tom., Cruise, Tom, 1962-.](#)

# Tom Cruise



Birth date: 1962-07-03  
Birth place: [Syracuse, New York](#)

**Abstract:** Thomas Cruise Mapother IV (born July 3, 1962), known professionally as Tom Cruise, is an American actor and producer. He has been nominated for three Academy Awards and has won three Golden Globe Awards. He started his career at age 19 in the film *Endless Love* (1981). After portraying supporting roles in *Taps* (1981) and *The Outsiders* (1983), his first leading role was in the romantic comedy *Risky Business*, released in August 1983. Cruise became a full-fledged movie star after starring as Pete "Maverick" Mitchell in the action drama *Top Gun* (1986). One of the biggest movie stars in Hollywood, Cruise starred in several more successful films in the 1980s, including the dramas *The Color of Money* (1986), *Cocktail* (1988), *Rain Man* (1988),

and *Born on the Fourth of July* (1989). In the 1990s, he starred in a number of hit films, including the romance *Far and Away* (1992), the drama *A Few Good Men* (1992), the legal thriller *The Firm* (1993), the romantic horror film *Interview with the Vampire: The Vampire Chronicles* (1994), the romantic comedy-drama sports film *Jerry Maguire* (1996), the erotic thriller *Eyes Wide Shut*, and the drama *Magnolia* (both 1999). Since 1996, Cruise has been well known for his role as secret agent Ethan Hunt in the *Mission: Impossible* film series, whose most recent film, *Mission: Impossible – Rogue Nation*, was released in 2015. In the 2000s, Cruise starred in a number of successful films, including the science fiction thrillers *Vanilla Sky* (2001) and *Minority Report* (2002), the epic war film *The Last Samurai* (2003), the crime film *Collateral* (2004), the science fiction disaster thriller *War of the Worlds* (2005), and the historical thriller *Valkyrie* (2008). In the 2010s, he has starred in the action comedy *Knight and Day* (2010), the thriller *Jack Reacher* (2012), the post-apocalyptic science fiction film *Oblivion* (2013), and the military science fiction film *Edge of Tomorrow* (2014). In 2012, Cruise was Hollywood's highest-paid actor. 16 of his films grossed over \$100 million domestically; 22 have grossed in excess of \$200 million worldwide. He has won Golden Globe Awards for Best Performance by an Actor in a Motion Picture in Drama in 1990 for *Born on the Fourth of July*; Best Performance by an Actor in a Motion Picture in



We index [alive endpoints](#) of the LinkedData.

[Launch Datao](#) to visually edit queries, HTML templates, remote data.

Search the LinkedData labels/URIs for :

Try [iswc](#) or [25th street](#) or [tom cruise](#) or [life on mars](#) or whatever you like (just type text in the form).

Facet:

- Interests:
- Business (1)
  - Commerce (1)
  - Companies (1)
  - Culture (1)
  - DBPedia (1)
  - Education (1)
  - Geography (1)
  - Music (1)
  - People (1)

- Types:
- City (2)
  - City (2)
  - Location (1)
  - Place (1)
  - Place (1)
  - PopulatedPlace (1)
  - Settlement (1)
  - SpatialThing (1)
  - Thing (1)
  - Q532 (1)

- **Syracuse, New York**, (سيراكيوز (نيويورك),  
**Syracuse (New York), Siracusa (Nueva York), シラキュース (ニューヨーク州), Syracuse (Nowy Jork).**  
- Place location  
- Place description  
- Town details  
- Band origin  
- Person Details  
- Music labels  
- Company details  
- Educational Institutions



We index [alive endpoints](#) of the [LinkedData](#).

[Launch Datao](#) to visually edit queries, HTML templates, remote data.

Search the [LinkedData](#) labels/URIs for :

Try [iswc](#) or [25th street](#) or [tom cruise](#) or [life on mars](#) or whatever you like (just type text in the form).

Facet:

- Interests:
- Business (1)
  - Commerce (1)
  - Companies (1)
  - Culture (1)
  - DBPedia (1)
  - Education (1)
  - Geography (1)
  - Music (1)
  - People (1)

- Types:
- City (2)
  - City (2)
  - Location (1)
  - Place (1)
  - Place (1)
  - PopulatedPlace (1)
  - Settlement (1)
  - SpatialThing (1)
  - Thing (1)
  - Q532 (1)

<http://dbpedia.org/sparql> > [http://dbpedia.org/resource/Syracuse,\\_New\\_York](http://dbpedia.org/resource/Syracuse,_New_York)

- [Syracuse, New York](#), (سييراكيوز (نيويورك), Syracuse (New York), Siracusa (Nueva York), シラキュース (ニューヨーク州), Syracuse (Nowy Jork).
- [Place location](#)
- [Place description](#)
- [Town details](#)
- [Band origin](#)
- [Person Details](#)
- [Music labels](#)
- [Company details](#)
- [Educational Institutions](#)

# Syracuse, New York



**Abstract:** Syracuse (*/ˈsɪrəkjuːs/* or local */ˈscrəkjuːs/*) is a city in, and the county seat of, Onondaga County, New York, in the United States. It is the largest U.S. city with the name "Syracuse", and is the fourth most populous metropolitan city in the state of New York. At the 2010 census, the city population was 145,170, and its metropolitan area had a population of 732,117. It is the economic and educational hub of Central New York, a region with over a million inhabitants. Syracuse is also well-provided with convention sites, with a downtown convention complex and, directly west of the city, the Empire Expo Center, which hosts the annual Great New York State Fair. Syracuse was named after the original Greek city Syracuse (Siracusa in Italian), a city on the eastern coast of the Italian island of Sicily. The city has functioned as a major crossroads over the last two centuries, first between the Erie Canal and its branch canals, then of the railway network. Today, Syracuse is located at the intersection of Interstates 81 and 90, and its airport is the largest in the region. Syracuse is home to Syracuse University, a major research university, as well as several smaller colleges and professional schools. In 2010, Forbes rated Syracuse 4th in the top 10 places in the U.S. to raise a family.




- Facet:
- Interests:
- Business (1)
  - Commerce (1)
  - Companies (1)
  - Culture (1)
  - DBPedia (1)
  - Education (1)
  - Geography (1)
  - Music (1)
  - People (1)
- Types:
- City (2)
  - City (2)
  - Location (1)
  - Place (1)
  - Place (1)
  - PopulatedPlace (1)
  - Settlement (1)
  - SpatialThing (1)
  - Thing (1)
  - Q532 (1)

- <http://dbpedia.org/sparql> > [http://dbpedia.org/resource/Syracuse,\\_New\\_York](http://dbpedia.org/resource/Syracuse,_New_York)
- **Syracuse, New York**, (سيراكيوز (نيويورك), Syracuse (New York), Siracusa (Nueva York), シラキュース (ニューヨーク州), Syracuse (Nowy Jork).
  - Place location
  - Place description
  - Town details
  - Band origin
  - Person Details
  - Music labels
  - Company details
  - Educational Institutions



# Syracuse, New York

**Abstract:** Syracuse (/ˈsɪrəkjuːs/ or local /ˈscrəkjuːs/) is a city in, and the county seat of, Onondaga County, New York, in the United States. It is the largest U.S. city with the name "Syracuse", and is the fourth most populous metropolitan city in the state of New York. At the 2010 census, the city population was 145,170, and its metropolitan area had a population of 732,117. It is the economic and educational hub of Central New York, a region with over a million inhabitants. Syracuse is well-provided with convention sites, with a downtown convention complex  west of the city, the Empire Expo Center, which hosts the annual [Great New York State Fair](#). Syracuse was named after the original Greek city Syracuse (Siracusa in Italian), a city on the eastern coast of the Italian island of Sicily. The city has functioned as a major crossroads over the last two centuries, first between the Erie Canal and its branch canals, then of the railway network. Today, Syracuse is located at the intersection of Interstates 81 and 90, and its airport is the largest in the region. Syracuse is home to Syracuse University, a major research university, as well as several smaller colleges and professional schools. In 2010, Forbes rated Syracuse 4th in the top 10 places in the U.S. to raise a family.

We index [alive endpoints](#) of the LinkedData. [Launch Datao](#) to visually edit queries, HTML templates, remote data.

Search the LinkedData labels/URIs for :

Try [iswc](#) or [25th street](#) or [tom cruise](#) or [life on mars](#) or whatever you like (just type text in the form).

Facet:

Interests:

- Culture (1)
- DBpedia (1)

Types:

- Attraction (1)
- Convention (1)
- Event (1)
- Event (1)
- Event (1)
- Feature (1)
- Node (1)
- SocietalEvent (1)
- TelevisionShow (1)
- Thing (1)
- TourismThing (1)

- Great New York State Fair.

- Great New York State Fair.  
- TV show

- Great New York State Fair.



We index [alive endpoints](#) of the LinkedData.

[Launch Datao](#) to visually edit queries, HTML templates, remote data.

Search the LinkedData labels/URIs for :

Try [iswc](#) or [25th street](#) or [tom cruise](#) or [life on mars](#) or whatever you like (just type text in the form).

Facet:

- Interests:
- Culture (1)
  - DBpedia (1)
- 
- Types:
- Attraction (1)
  - Convention (1)
  - Event (1)
  - Event (1)
  - Event (1)
  - Feature (1)
  - Node (1)
  - SocietalEvent (1)
  - TelevisionShow (1)
  - Thing (1)
  - TourismThing (1)

- [Great New York State Fair.](#)

---

- [Great New York State Fair.](#)

  - TV show

---

- [Great New York State Fair.](#)

<http://dbpedia.org/sparql> > [http://dbpedia.org/resource/Great\\_New\\_York\\_State\\_Fair](http://dbpedia.org/resource/Great_New_York_State_Fair)

**Title:** Great New York State Fair

**Abstract:** The Great New York State Fair is a 12-day showcase of agriculture, entertainment, education and technology. With midway rides, concessionaires, exhibits and concerts, it has become New York's largest annual event and an end-of-summer tradition for hundreds of thousands of families from all corners of the state. The first fair took place in Syracuse in 1841 and took permanent residence there in 1890. It is the oldest and one of the largest state fairs in the United States, with nearly one million visitors annually. The Great New York State Fair begins on the third or fourth Thursday in August and runs for 12 days, ending on Labor Day. The 2016 fair ran from August 25 – September 5. It is held at the 375-acre (152 ha) Empire Expo Center on the western border of Syracuse, in the town of Geddes.



# Le service REST



# Les données brutes



Tom Cruise @ DBPedia

Search the [LinkedData labels/URIs](#) for :

Try [iswc](#) or [25th street](#) or [tom cruise](#) or [life on mars](#) or whatever you like (just type text in the form).

Facet:

Interests:

- Business (1)
- Cinema (2)
- Culture (10)
- Data Catalogs (3)
- DBPedia (10)
- DOREMUS (1)
- Entertainment (5)
- Librarians (3)
- LinkedMDB (1)
- Movies (4)
- Music (1)
- People (3)
- WorldCat (3)

Types:

- Actor (2)
- actor (1)
- Agent (2)
- Agent (3)
- Artist (2)
- Book (5)
- Book (3)
- Book (3)
- Concept (4)
- CreativeWork (4)

- **Tom Cruise.**  
- Musical person @ DOREMUS

- **Tom Cruise.**  
- MusicArtist @ LinkedBrainz

- **Tom Cruise.**  
- Subcategories @ DBPedia  
- Resources in category @ DBPedia  
- Belongs to categories @ DBPedia

- **Tom Cruise, توم كروز, トム・クルーズ.**  
- Person Details  
- Movie details

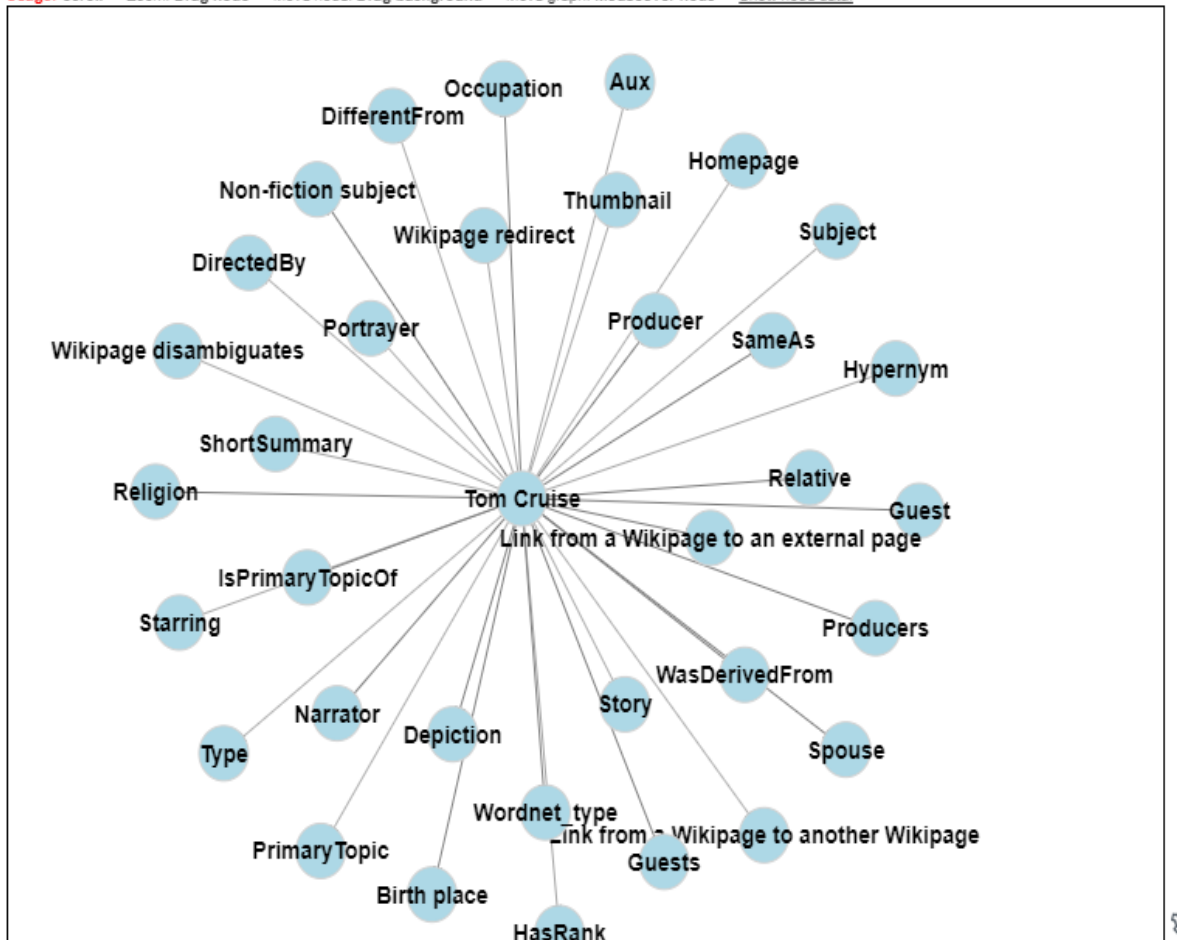
- **Tom Cruise.**

- **Tom Cruise.**

- **Cruise, Tom., Cruise, Tom, 1962-.**  
- Book details

<http://dbpedia.org/sparql> > [http://dbpedia.org/resource/Tom\\_Cruise](http://dbpedia.org/resource/Tom_Cruise)

Usage: Scroll → Zoom. Drag node → Move node. Drag background → Move graph. Mouseover node → [Show node data](#).



We index [alive endpoints](#) of the LinkedData.

[Launch Datao](#) to visually edit queries, HTML templates, remote data.

Search the LinkedData labels/URIs for :

Try [iswc](#) or [25th street](#) or [tom cruise](#) or [life on mars](#) or whatever you like (just type text in the form).

Facet:

Interests:

- Business (1)
- Cinema (2)
- Culture (10)
- Data Catalogs (3)
- DBPedia (10)
- DOREMUS (1)
- Entertainment (5)
- Librarians (3)
- LinkedMDB (1)
- Movies (4)
- Music (1)
- People (3)
- WorldCat (3)

Types:

- Actor (2)
- actor (1)
- Agent (2)
- Agent (3)
- Artist (2)
- Book (5)
- Book (3)
- Book (3)
- Concept (4)

- **Tom Cruise.**  
- Musical person @ DOREMUS

- **Tom Cruise.**  
- MusicArtist @ LinkedBrainz

- **Tom Cruise.**  
- Subcategories @ DBPedia  
- Resources in category @ DBPedia  
- Belongs to categories @ DBPedia

- **Tom Cruise.** [توم كروز](#), [トム・クルーズ](#).  
- Person Details  
- Movie details

- **Tom Cruise.**

- **Tom Cruise.**

- **Cruise, Tom., Cruise, Tom, 1962-.**  
- Book details

<http://dbpedia.org/sparql> > [http://dbpedia.org/resource/Tom\\_Cruise](http://dbpedia.org/resource/Tom_Cruise)

Usage: Scroll → Zoom. Drag node → Move node. Drag background → Move graph. Mouseover node → Show node data.



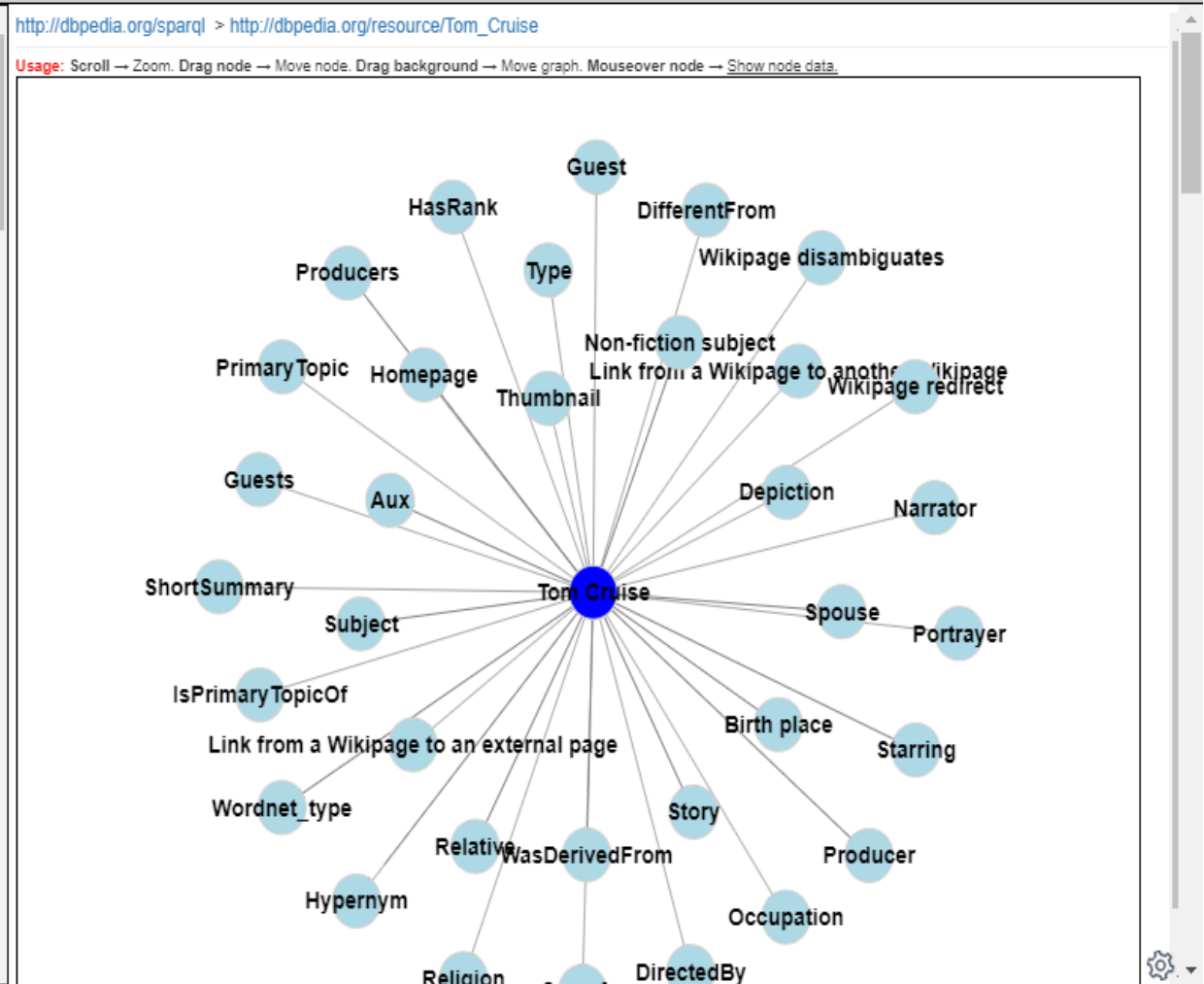
Search the LinkedData labels/URIs for :

Try [iswc](#) or [25th street](#) or [tom cruise](#) or [life on mars](#) or whatever you like (just type text in the form).

(Click now to pinpoint this window.)

## Tom Cruise :

| Property       | Value  |
|----------------|--|
| GivenName      | Thomas   |
| Wikt :         | no   |
| Birth date :   | 1962-7-3   |
| Birth date :   | 1962-07-03   |
| Title :        | Awards for Tom Cruise  |
| Has abstract : | Thomas Cruise Mapother IV (born July 3, 1962), known professionally as Tom Cruise, is an American actor and producer. He has been nominated for three Academy Awards and has won three Golden Globe Awards. He started his career at age 19 in the film Endless Love (1981). After portraying supporting roles in Taps (1981) and The Outsiders (1983), his first leading role was in the romantic comedy Risky Business, released in August 1983. Cruise became a full-fledged movie star after starring as Pete "Maverick" Mitchell in the action drama Top Gun (1986). One of the |





Syracuse, N.Y @ DBPedia









Search the LinkedData labels/URIs for :

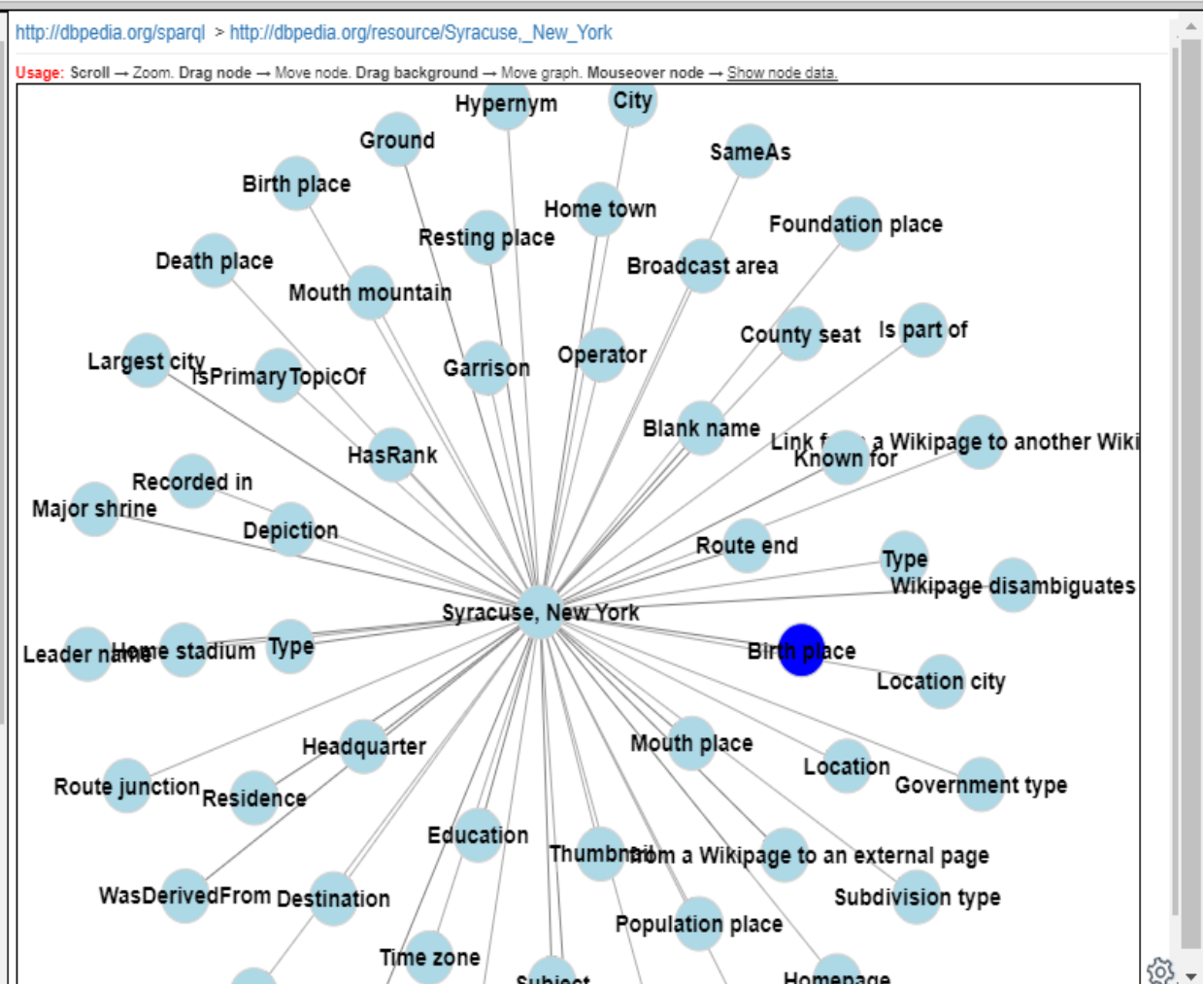
Try [iswc](#) or [25th street](#) or [tom cruise](#) or [life on mars](#) or whatever you like (just type text in the form).

(Click now to pinpoint this window.)

### Birth place :

Resources

- [Philip Goettel](#)
- [James McConnell \(Medal of Honor\)](#)
- [John Kiggins](#)
- [Donald B. Steinaker](#)
- [Bill Tanguay](#)
- [Tsquared](#)
- [Tom Peyer](#)
- [John Wainwright \(Medal of Honor\)](#)
- [Edward E. Gyatt](#)
- [Heather Cook](#)
- [Elizabeth Punsalan](#)



Great New York State Fair @ DBPedia

We index [alive endpoints](#) of the [LinkedData](#).

[Launch Datao](#) to visually edit queries, HTML templates, remote data.

Search the [LinkedData](#) labels/URIs for :

Try [iswc](#) or [25th street](#) or [tom cruise](#) or [life on mars](#) or whatever you like (just type text in the form).

- Facet:
- Interests:
- Culture (1)
  - DBPedia (1)
- 
- Types:
- Attraction (1)
  - Convention (1)
  - Event (1)
  - Event (1)
  - Event (1)
  - Feature (1)
  - Node (1)
  - SocietalEvent (1)
  - Television Show (1)
  - Thing (1)
  - TourismThing (1)

- Great New York State Fair.

- Great New York State Fair.

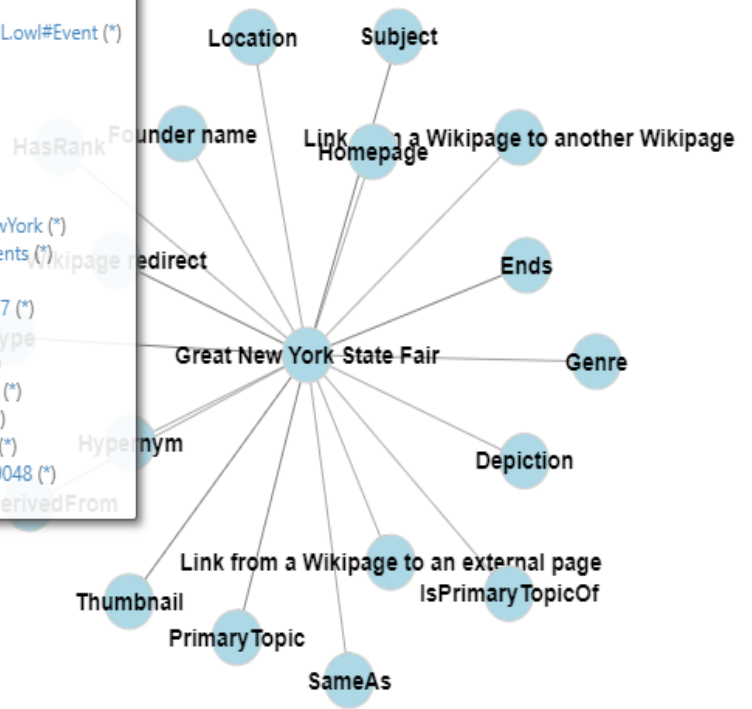
- TV show

- Great New York State Fair.

<http://dbpedia.org/sparql> > [http://dbpedia.org/resource/Great\\_New\\_York\\_State\\_Fair](http://dbpedia.org/resource/Great_New_York_State_Fair)

Usage: Scroll → Zoom. Drag node → Move node. Drag background → Move graph. Mouseover node → [Show node data](#).

Resource: [http://dbpedia.org/resource/Great\\_New\\_York\\_State\\_Fair](http://dbpedia.org/resource/Great_New_York_State_Fair)  
 Endpoint: <http://dbpedia.org/sparql>  
 Namedgraph: <http://dbpedia.org>  
 Types: <http://www.w3.org/2002/07/owl#Thing> (\*)  
<http://www.ontologydesignpatterns.org/ont/dul/DUL.owl#Event> (\*)  
<http://www.wikidata.org/entity/Q1656682> (\*)  
<http://dbpedia.org/ontology/Convention> (\*)  
<http://dbpedia.org/ontology/Event> (\*)  
<http://dbpedia.org/ontology/SocietalEvent> (\*)  
<http://dbpedia.org/ontology/TelevisionShow> (\*)  
<http://schema.org/Event> (\*)  
<http://dbpedia.org/class/yago/WikicatFestivalsInNewYork> (\*)  
<http://dbpedia.org/class/yago/WikicatSeptemberEvents> (\*)  
<http://dbpedia.org/class/yago/WikicatStateFairs> (\*)  
<http://dbpedia.org/class/yago/Abstraction100002137> (\*)  
<http://dbpedia.org/class/yago/Act100030358> (\*)  
<http://dbpedia.org/class/yago/Activity100407535> (\*)  
<http://dbpedia.org/class/yago/Attraction106615561> (\*)  
<http://dbpedia.org/class/yago/Carnival100519333> (\*)  
<http://dbpedia.org/class/yago/Diversion100426928> (\*)  
<http://dbpedia.org/class/yago/Entertainment100429048> (\*)  
<http://dbpedia.org/class/yago/Event100029378> (\*)



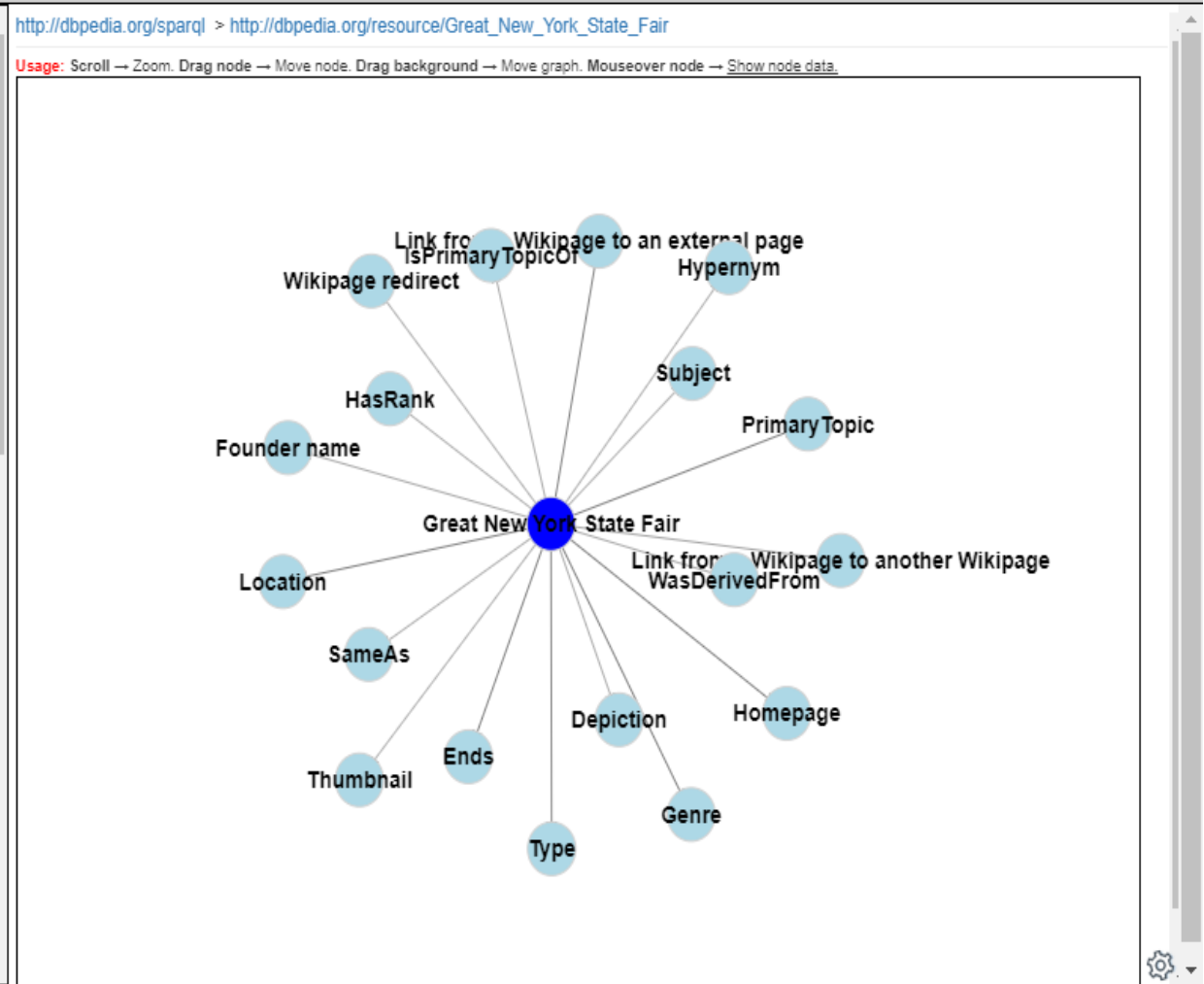
Search the [LinkedData](#) labels/URIs for :

Try [iswc](#) or [25th street](#) or [tom cruise](#) or [life on mars](#) or whatever you like (just type text in the form).

(Click [now](#) to pinpoint this window.)

## Great New York State Fair :

| Property             | Value  |
|----------------------|--|
| Attendance           | 1117630  |
| Beginns :            | Second Thursday before Labor Day   |
| Name :               | Great New York State Fair  |
| Label :              | Great New York State Fair  |
| Wikipage revision ID | 743001547  |
| Has abstract :       | The Great New York State Fair is a 12-day showcase of agriculture, entertainment, education and technology. With midway rides, concessionaires, exhibits and concerts, it has become New York's largest annual event and an end-of-summer tradition for hundreds of thousands of families from all corners of the state. The first fair took place in Syracuse in 1841 and took permanent residence there in 1890. It is the oldest and one of the largest state fairs in the United States. |



# Multi datasets

We index [live endpoints](#) of the LinkedData.

[Launch Datao](#) to visually edit queries, HTML templates, remote data.

Search the LinkedData labels/URIs for :

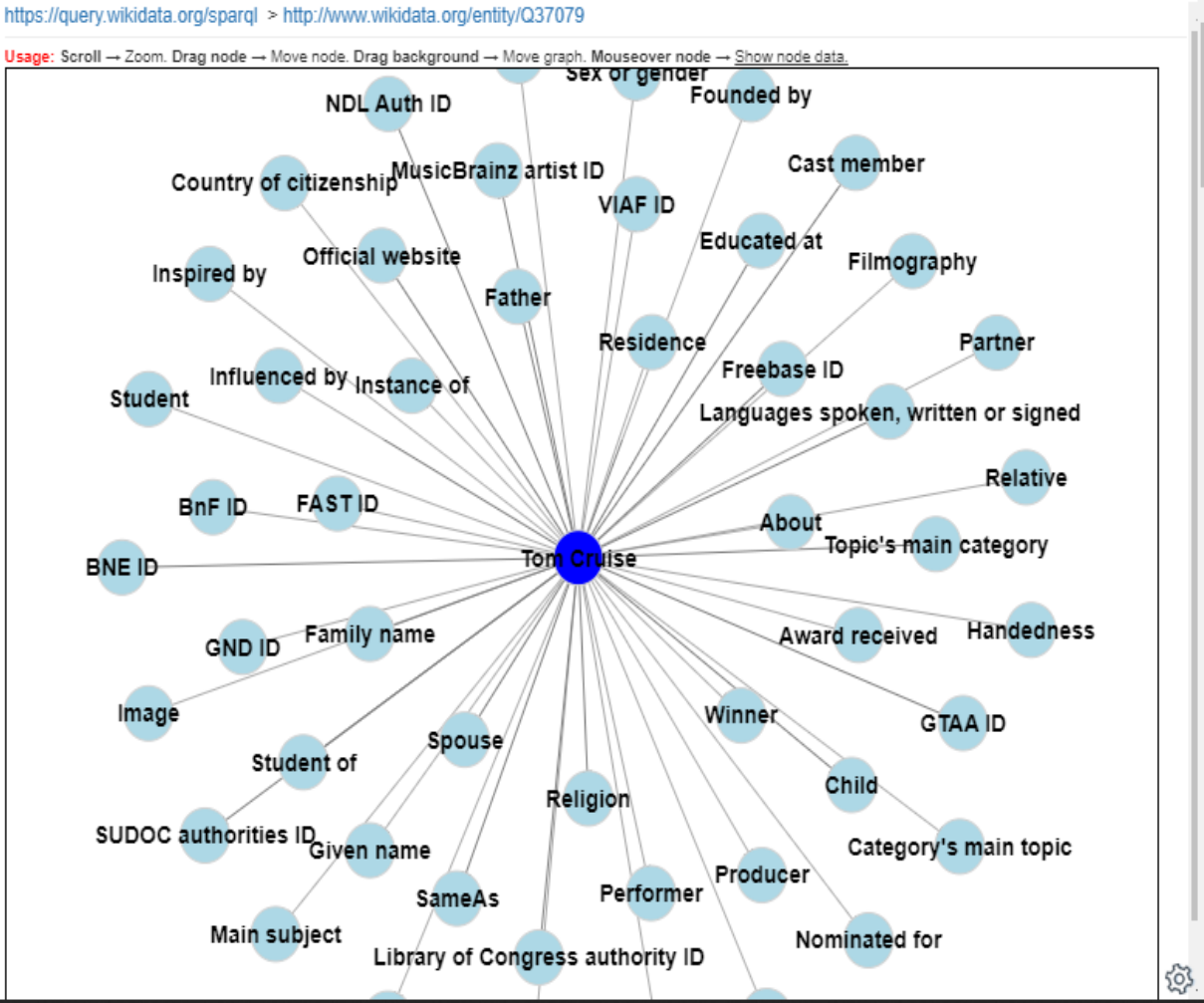
Valider

Try [iswc](#) or [25th street](#) or [tom cruise](#) or [life on mars](#) or whatever you like (just type text in the form).

(Click [now](#) to pinpoint this window.)

### Tom Cruise :

| Property                          | Value                |
|-----------------------------------|----------------------|
| US National Archives Identifier : | 10571715             |
| Work period (start) :             | 1981-01-01T00:00:00Z |
| NTA ID :                          | 073163406            |
| BNE ID :                          | XX1109117            |
| NNDB people ID :                  | 791/000022725        |
| Freebase ID :                     | /m/07r1h             |
| AllMovie artist ID :              | p86295               |
| Tumblr ID :                       | tomcruise            |
| Date of birth :                   | 1962-07-03T00:00:00Z |



We index [alive endpoints](#) of the LinkedData.

[Launch Datao](#) to visually edit queries, HTML templates, remote data.

Search the LinkedData labels/URIs for :

Try [iswc](#) or [25th street](#) or [tom cruise](#) or [life on mars](#) or whatever you like (just type text in the form).

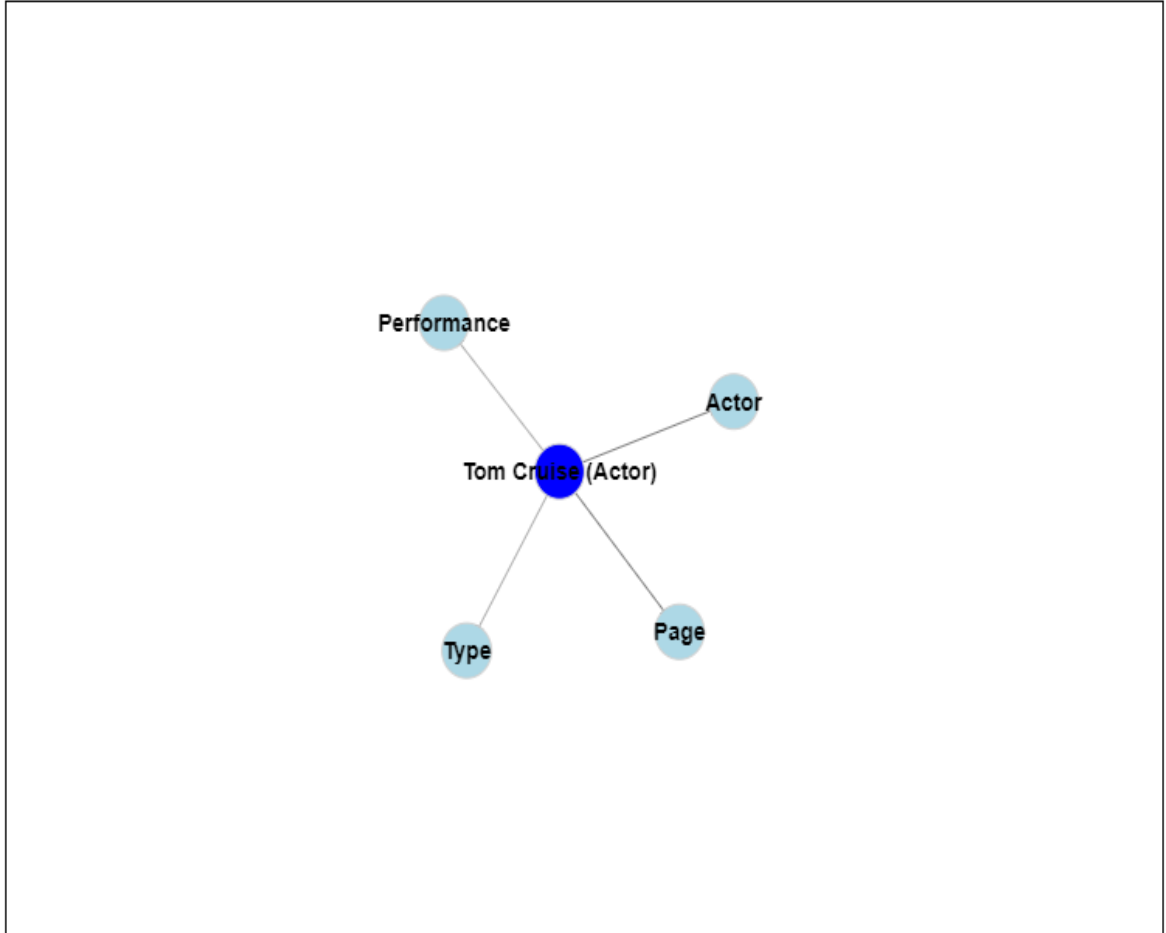
*(Click now to pinpoint this window.)*

## Tom Cruise (Actor) :

| Property           | Value              |
|--------------------|--------------------|
| Label :            | Tom Cruise (Actor) |
| Actor_actorid :    | 29671              |
| Actor_nytimes_id : |                    |
| Actor_netflix_id : |                    |
| Actor_name :       | Tom Cruise         |

<http://linkedmdb.lolive.net/sparql> > <http://data.linkedmdb.org/resource/actor/29671>

Usage: Scroll → Zoom. Drag node → Move node. Drag background → Move graph. Mouseover node → Show node data.



We index [alive endpoints](#) of the LinkedData.

[Launch Datao](#) to visually edit queries, HTML templates, remote data.

Search the LinkedData labels/URIs for :

Try [iswc](#) or [25th street](#) or [tom cruise](#) or [life on mars](#) or whatever you like (just type text in the form).

(Click [now](#) to pinpoint this window.)

# 40174678 :

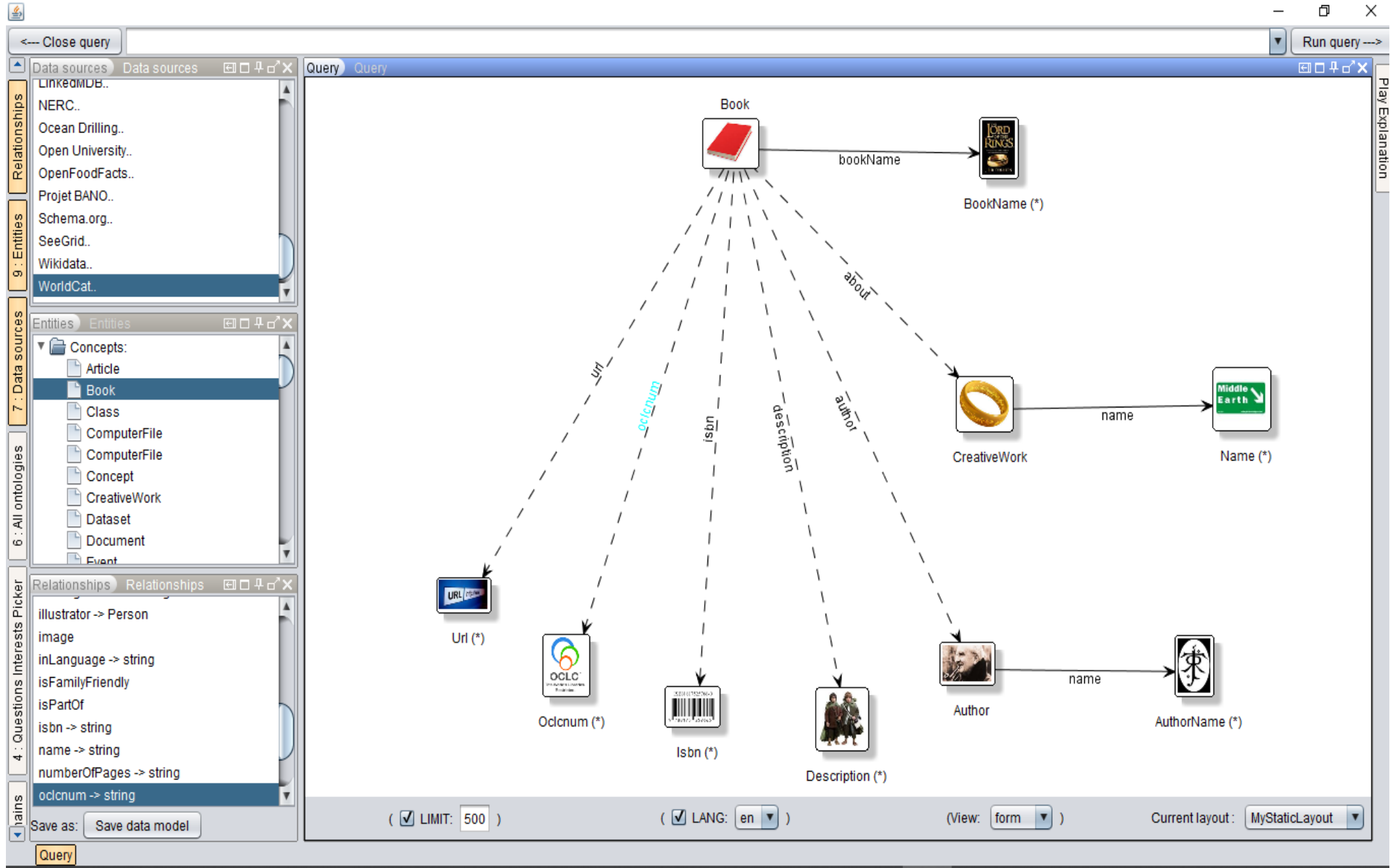
| Property        | Value  |
|-----------------|--|
| HoldingsCount : | 315  |
| Name :          | Tom Cruise   |
| Oclcnum :       | 40174678   |
| Genre :         | Juvenile works   |
| Genre :         | Biography  |
| NumberOfPages : | 110  |
| Description :   | Follows the life and career of the popular actor, focusing on his struggle with dyslexia, his starring roles in such movies as "Risky Business," "Top Gun," and "Jerry Maguire," and his involvement in the Church of Scientology. |
| InLanguage :    | en   |
| CopyrightYear : | 1999   |

<http://worldcat.lolive.net/sparql> > <http://www.worldcat.org/oclc/40174678>

Usage: Scroll → Zoom. Drag node → Move node. Drag background → Move graph. Mouseover node → Show node data.







← Close template
Run template

Query Query
⏏ ⏏ ⏏ ⏏

```

graph TD
    Book[Book] -- bookName --> BookName[BookName (*)]
    BookName -- name --> MiddleEarth[Middle Earth]
    Book -- about --> CreativeWork[CreativeWork]
    CreativeWork -- name --> AuthorName[AuthorName (*)]
    AuthorName -- name --> Author[Author]
    Book -.->|url| Url[Url (*)]
    Book -.->|oclcnum| Oclcnm[Oclcnm (*)]
    Book -.->|isbn| Isbn[Isbn (*)]
    Book -.->|description| Description[Description (*)]
    Book -.->|author| Author
  
```

Template Template
⏏ ⏏ ⏏ ⏏

# - Harry Potter -

by anAuthor

---

A long description

---

ISBN: no isbn  
OCLC: no oclc

---

More infos [here](#)

Browser DOM Browser DOM
⏏ ⏏ ⏏ ⏏

- ▼ HTML
  - HEAD
  - ▼ BODY
    - ▼ DIV (foreach Book)
      - ▼ CENTER
        - ▼ DIV
          - ▼ H1
            - ▼ SPAN
              - " - "
              - ▼ SPAN(setContentTo <http://schema.org/name>)
                - " Harry Potter "
                - ▼ SPAN
                  - " - "
                  - ▼ SPAN(followAll [Person](#))
                    - " by "
                    - ▼ SPAN
                      - ▼ SPAN(setContentTo <http://schema.org/name>)

Template
Browser DOM
Query

[View HTML](#)

We index [alive endpoints](#) of the LinkedData.

[Launch Datao](#) to visually edit queries, HTML templates, remote data.

Search the LinkedData labels/URIs for :

Try [iswc](#) or [25th street](#) or [tom cruise](#) or [life on mars](#) or whatever you like (just type text in the form).

Facet:

Interests:

- Business (1)
- Cinema (2)
- Culture (10)
- Data Catalogs (3)
- DBPedia (10)
- DOREMUS (1)
- Entertainment (5)
- Librarians (3)
- LinkedMDB (1)
- Movies (4)
- Music (1)
- People (3)
- WorldCat (3)

Types:

- Actor (2)
- actor (1)
- Agent (2)
- Agent (3)
- Artist (2)
- Book (5)
- Book (3)
- Book (3)
- Concept (4)
- CreativeWork (1)

### - Tom Cruise, [توم كروز](#), [トム・クルーズ](#).

- [Person Details](#)
- [Movie details](#)

### - [Tom Cruise](#).

### - [Tom Cruise](#).

### - [Cruise, Tom., Cruise, Tom, 1962-](#).

- [Book details](#)
- [Video](#)

### - [Tom Cruise](#).

- [Book details](#)

### - [Tom Cruise Oblivion](#).

### - [Images of Tom Cruise](#).

- [Subcategories @ DBPedia](#)
- [Resources in category @ DBPedia](#)
- [Belongs to categories @ DBPedia](#)

<http://worldcat.lolive.net/sparql> > <http://www.worldcat.org/oclc/40174678>

# - Tom Cruise -

by Powell, Phelan.

Follows the life and career of the popular actor, focusing on his struggle with dyslexia, his starring roles in such movies as "Risky Business," "Top Gun," and "Jerry Maguire," and his involvement in the Church of Scientology.

ISBN:

OCLC: 40174678

